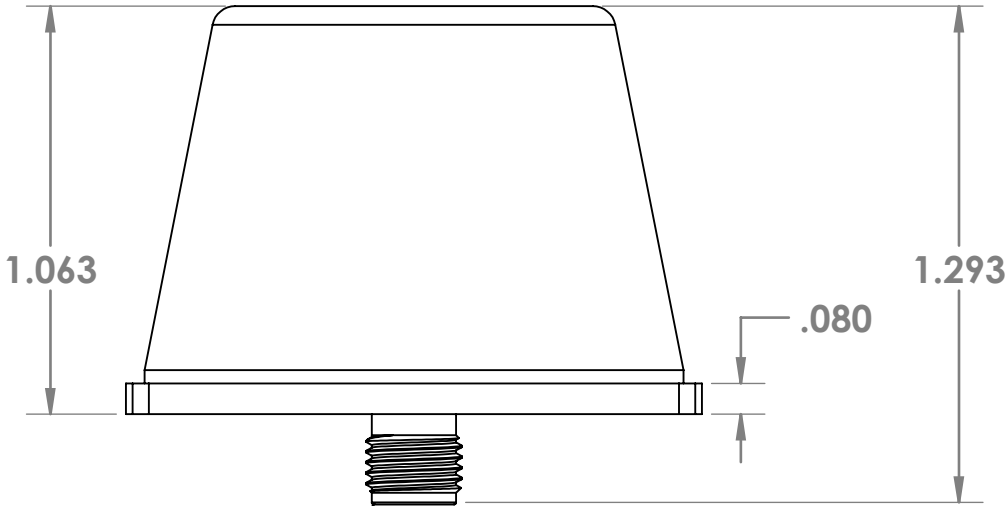
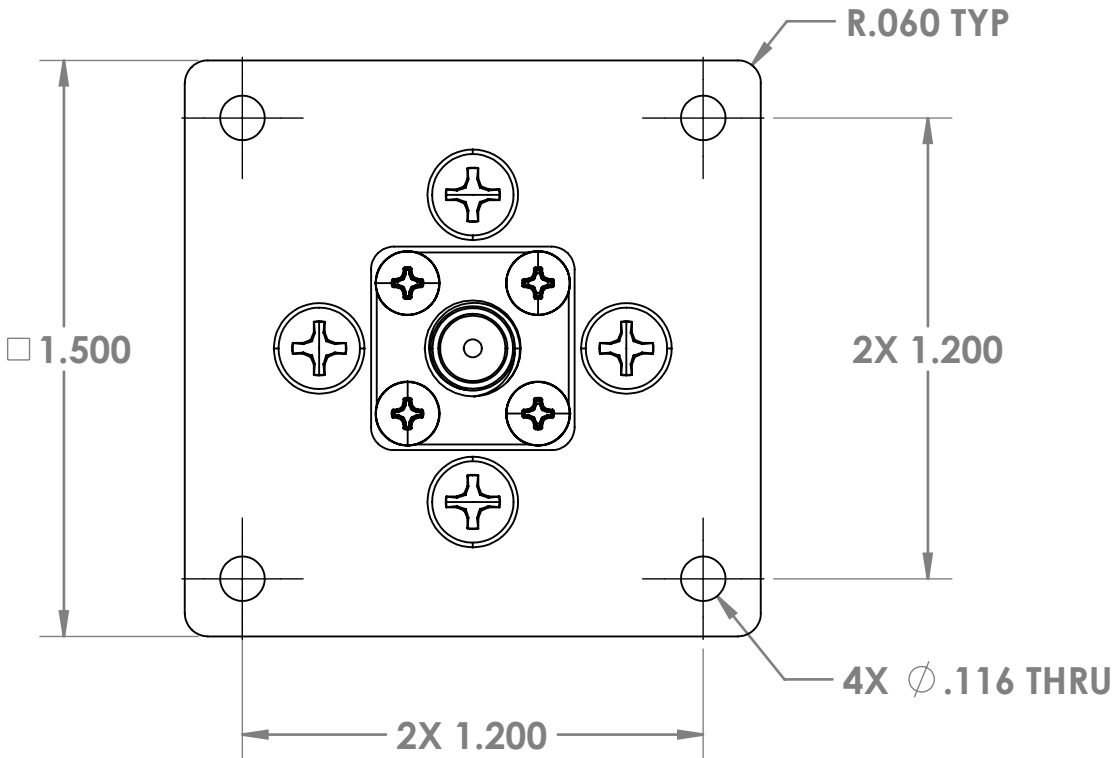
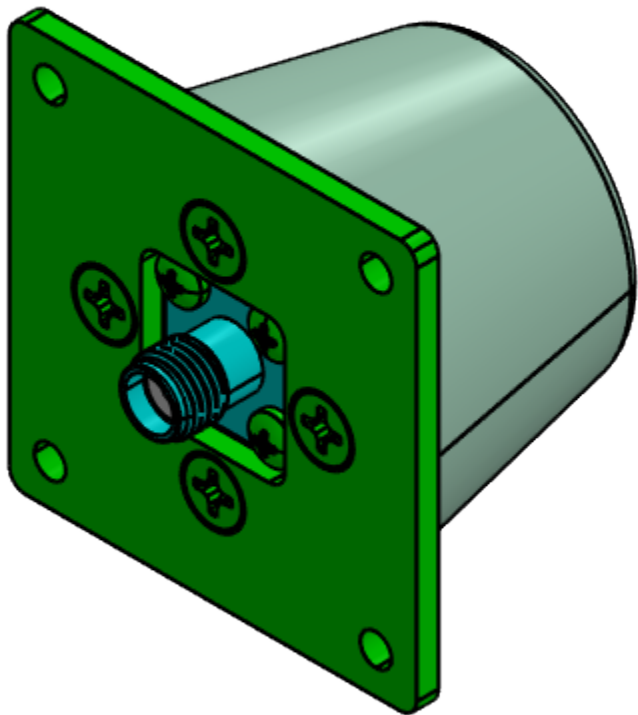
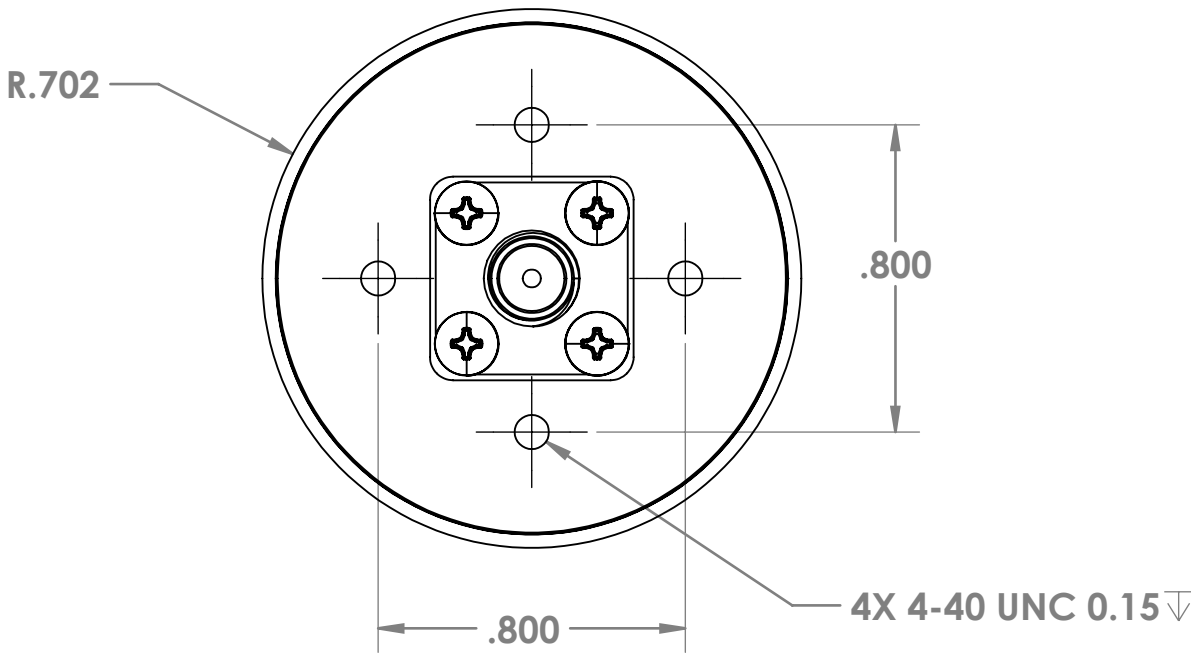
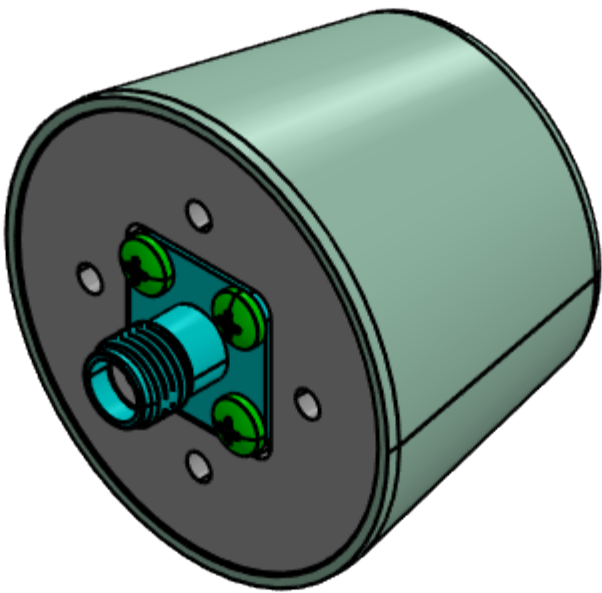


THIS DOCUMENT INVOLVES CONFIDENTIAL PROPRIETARY INFORMATION OF SIGNAL ANTENNA SYSTEMS, INC. AND SHALL NOT BE COPIED OR REPRODUCED IN WHOLE OR IN PART, NOR ITS CONTENTS REVEALED IN ANY MANNER TO ANY PERSON, EXCEPT TO MEET THE PURPOSE FOR WHICH IT WAS DELIVERED. ALL DESIGN, MANUFACTURING, REPRODUCTION, USE, AND SALE RIGHTS REGARDING THE SAME ARE EXPRESSLY RESERVED.

REVISIONS				
ZONE	REV.	DESCRIPTION	DATE	APPROVED
	A	INITIAL RELEASE	7/16/2025	AK



SMA (FEMALE)
CONNECTOR



PROPRIETARY AND CONFIDENTIAL
THE INFORMATION CONTAINED IN THIS
DRAWING IS THE SOLE PROPERTY OF
SIGNAL ANTENNA SYSTEMS. ANY
REPRODUCTION IN PART OR AS A WHOLE
WITHOUT THE WRITTEN PERMISSION OF
SIGNAL ANTENNA SYSTEMS IS
PROHIBITED.

		UNLESS OTHERWISE SPECIFIED:		NAME		DATE		TITLE: WIDEBAND OMNI ANTENNA OUTLINE & MOUNTING, (UWB-0618 and UWB-1016)							
		DIMENSIONS ARE IN INCHES		DRAWN		A.K						7/16/25			
		TOLERANCES:		CHECKED		A.B						7/16/25			
		DECIMALS		ENG APPR.		A.B						7/16/25			
		ANGULAR: ±0°30'		MFG APPR.		N/A						7/16/25			
		XX ±0.3		Q.A.		J.L		7/16/25		COMMENTS:					
		XXX ±0.10													
		XXXX ±0.0010													
		INTERPRET GEOMETRIC TOLERANCING PER:													
		MATERIAL													
		N/A													
		FINISH													
NEXT ASSY		USED ON		SEE NOTES											
APPLICATION		DO NOT SCALE DRAWING													
				SIZE								DWG. NO.		REV	
				C								UWB-0618		A	
				SCALE: 2:1								WEIGHT:		SHEET 1 OF 1	